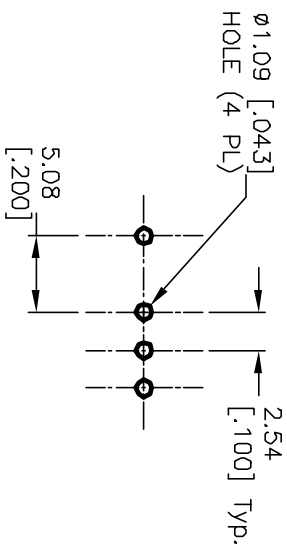
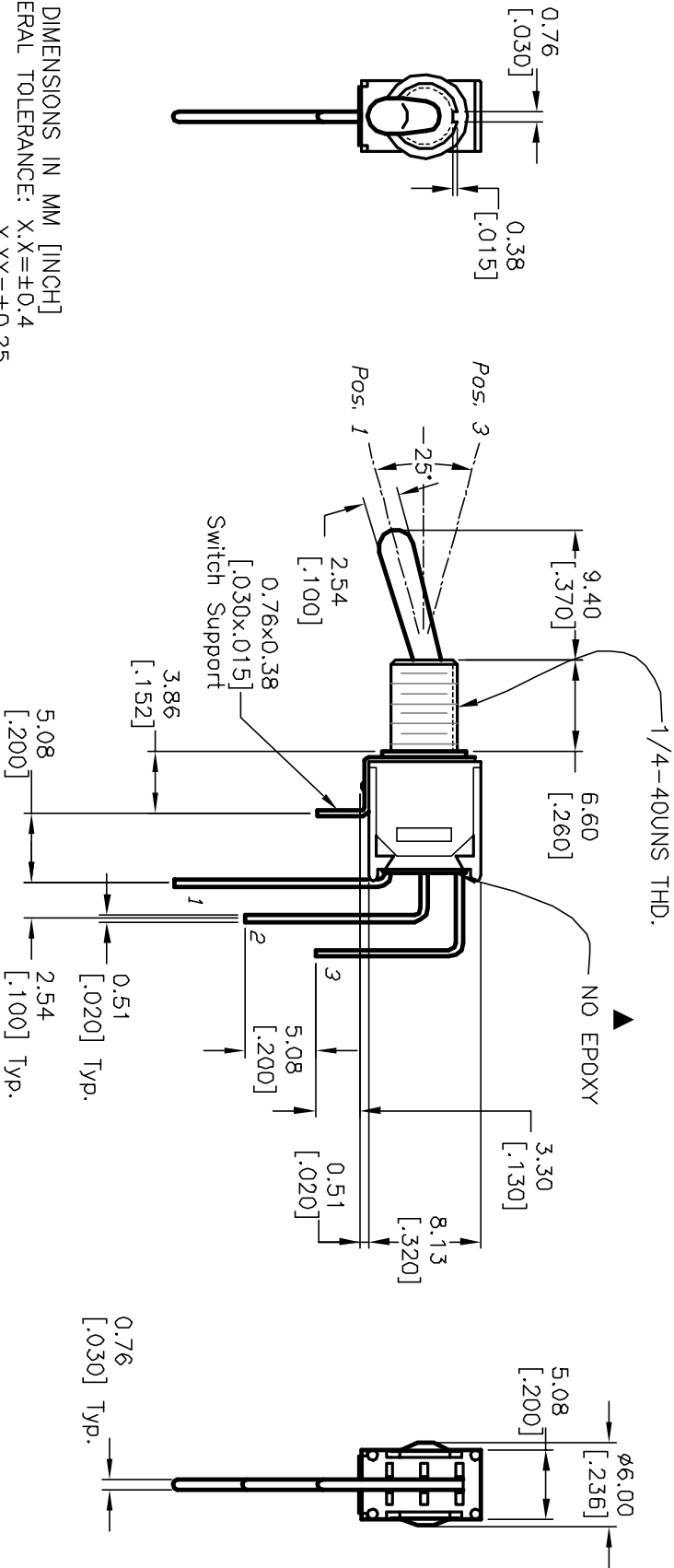


CIRCUIT: SPDT
CONTACT CONFIGURATION

| SWITCH FUNCTION | | |
|-----------------|--------|--------|
| POS. 1 | POS. 2 | POS. 3 |
| DN | NONE | DN |
| 2-3 | OPEN | 2-1 |



RECOMMENDED P.C.B. LAYOUT



NOTES:

1. ALL DIMENSIONS IN MM [INCH]
2. GENERAL TOLERANCE: X.X=±0.4
X.XX=±0.25
3. TERM. NOS. FOR REF. ONLY
4. RATING: 3A @120VAC or 28VDC; 1A @250VAC.
5. FIXED TERM. MOVING CONTACT: Silver plated Copper alloy
6. ELECTRICAL LIFE: 30,000 make-and-break cycle at full load.
7. DIELECTRIC STRENGTH: 1,000 V RMS @sea level.
8. OPERATING TEMP.: -30°C to 85°C

| | | | | |
|------|---------|-------------|---------|------|
| REV. | ECN NO. | DESCRIPTION | DATE | CHKD |
| A | 12467 | RELEASED | 10/7/02 | CB |

| | | | | | | |
|---------------------------------|--|-------|---------|----|---------|-----|
| TITLE | | SCALE | DATE | DR | DWG | REV |
| 200 MSP-1 T1 B7 M7 Q (NO EPOXY) | | 2:1 | 10/7/02 | CB | T211097 | A |



THE INFORMATION CONTAINED IN THIS DOCUMENT IS PROPRIETARY TO E-SWITCH AND IS NOT TO BE COPIED OR TRANSMITTED